



VERTICAL BANDSAWS

A Line of Quality Constructed,
Heavy-duty Tilt Frame Miter Saw and
Vertical Bandsaws 20" to 40" Throat

TILT FRAME MITER SAW



The VG510SA and VG560SA heavy-duty vertical tilt frame miter bandsaw is a large capacity, high precision cutting machine

Features

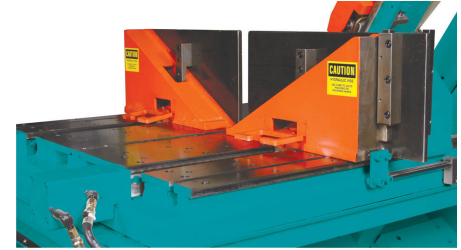
- Great versatility, fast and easy set-up — Saw frame tilts to any angle between 60° left and 60° right.
- Large cutting capacity — UP to 22" x 30" at 90°, 22" x 21" at 45° left and right, 22" x 14" at 60° left
- Front mounted control panel — Easily control all sawing functions, miter angle, blade speed, etc.
- Cutting control — Infinitely variable hydraulic cutting pressure controlled from control panel
- Canted saw frame — Saw frame can be manually canted from 0° to 5° forward for more efficient cutting
- Flood coolant — Equipped with a recirculating flood coolant system
- Large work area — By removing the movable front vise jaw, large bulky parts or irregular shaped work pieces can be manually clamped to the large work table
- Easy loading and unloading — Saw frame moves behind fixed back vise jaw to allow easy loading and unloading of workpiece from top or side
- Precision Guidance — Blade is guided by solid carbide blade guides with back up rollers. Rigid frame design is guided by two linear rails for very precise cuts
- Blade tension control — Equipped with hydraulic blade tension with pressure indicator
- Small footprint — For such a large cutting area, the machine requires only a 123" x 110" footprint

TILT FRAME MITER SAW FEATURES



Control Panel

The front mounted control panel controls all sawing functions such as, blade speed, easy to read blade speed chart, frame feed and on **Model VG450MP**, hydraulic frame tilt, hydraulic left vise clamp/release, hydraulic guide arm, and has a HMI touch screen that control blade START/STOP, coolant START/STOP, SLOW/FAST mode for material feed and frame tilt, frame angle readout and blade speed readout.



Hydraulic Rack Gear Vice is operated from the control panel. Independent operation of the left and right jaw or both jaws together.

Specifications

Model	VG510SA		VG560SA	
Cutting Capacity	0° Frame Cant	5° Frame Cant	0° Frame Cant	5° Frame Cant
90° rectangular	20" x 26.4"	20" x 24"	22" x 30"	20" x 27.5"
45° rectangular left	20" x 18.3"	20" x 16.7"	22" x 21"	20" x 19"
60° rectangular left	20" x 12.8"	20" x 11.8"	22" x 14"	20" x 13"
45° rectangular right	20" x 17.1"	20" x 15.7"	20" x 19.5"	20" x 18"
60° rectangular right	20" x 10.4"	20" x 10"	22" x 12"	20" x 10.5"
Maximum Vise Opening	20"		22"	
Blade Speed	66 – 264 ft/min Inverter Controlled			
Blade Size	192.1" x 1.25" x .043"		208.6" x 1.25" x .043"	
Blade Tension	Hydraulic Controlled			
Blade Guide	Interchangeable Tungsten Carbide w/ Rollers			
Guide Arm	Hydraulic Positioning on Linear Guide			
Saw Blade Motor	7.5 Hp			
Hydraulic Motor	1 Hp			
Hydraulic Tank Capacity	(DTE 24) 22.1 Gallons			
Hydraulic Output Pressure	540 – 640 PSI			
Coolant Pump Motor	¼ Hp			
Coolant Tank Capacity	34 Gallons			
Feed Range	0 – 132 lb/f			
Work Table Size	33" x 20"			
Work Table Height	39.4"		41"	
Floor Space (W x D x H)	98.5" x 102.4" x 98.5"		122.8" x 109.5" x 101.3"	
Shipping Dim (W x D x H)	125" x 90" x 97"		126" x 90" x 96"	
Net Weight	3795 lbs		4796 lbs	
Shipping Weight	4092 lbs		5082 lbs	



Hydraulic pressure gauges are mounted in the control panel. This lets the operator easily adjust the blade cutting pressure and will let the operator adjust hydraulic vise grip pressure.

Standard Features

- Powerful 7.5 hp drive motor
- Inverter variable speed drive
- Solid carbide blade guides
- Flood coolant system
- Operation and parts manual
- Hydraulic frame feed
- Hydraulic frame tilt positing
- Hydraulic left and right vise
- Hydraulic guide arm
- Hydraulic blade tension with pressure indicator
- Digital display of miter angle, 0.1° accuracy

Optional Equipment

- SA-26T 25" x 10" Heavy-Duty Roller Table, Adjustable Height 31" to 39"
- SA-27T 25" x 5" Heavy-Duty Roller Table, Adjustable Height 31" to 39"

All specifications subject to change without notice or obligation.



CLAUSING KALAMAZOO 12" X 20" VERTICAL BANDSAWS

Features

- 230 or 460 volt 3 phase 60 hertz electrics
- Magnetic starter with 110v control circuit and overload protection
- 3 hp (2.2 Kw) TEFC motor
- Dual range transmission
- Sets of (4) blade guides sizes 1/16", 1/8", 3/16", 1/4", 3/8", 1/2", 5/8", 3/4", 1" with back-up roller
- Fixed table models 26-3/4" (680 mm) x 29" (736 mm) heavy-duty cast iron table with two-way tilt (15°L & 45°R)
- Hydraulic table models 26-3/4" (680 mm) x 29" (736 mm) heavy-duty cast iron table with two-way tilt (15°L & 45°R) four (4) T-slots on top table, travel 13"
- Bonded rubber band wheels
- 110v work light
- Built-in air chip blower
- Blade tension indicator
- Blade speed indicator
- Rip fence
- 3/4" (19 mm) carbon hardback blade
- Locking band wheel doors
- Operation and parts manual
- Two (2) year limited warranty

Optional Equipment

- 1" Capacity Blade Welder, Shear and Flash Grinder
- Circle Cutting Attachment
- Miter Gauge
- Workholding Jaws

Specifications

Model	V2012F	V2012H
Throat	20" (508 mm)	20" (508 mm)
Work Height	12" (305 mm)	12" (305 mm)
Drive Motor	3 hp (2.2 kw)	3 hp (2.2 kw)
Blade Length	159"-162" (4040-4115 mm)	159"-162" (4040-4115 mm)
Blade Width	1/8"-1" (3-25 mm)	1/8"-1" (3-25 mm)
Blade Speed (fpm)	50-5200	50-5200
Dimensions		
Length	51" (1295 mm)	51" (1295 mm)
Width	44" (1118 mm)	44" (1118 mm)
Height	81" (2057 mm)	81" (2057 mm)
Net Weight	1390 lbs (630 kg)	1500 lbs (680 kg)
Shipping Weight	1540 lbs (698 kg)	1650 lbs (748 kg)

All specifications subject to change without notice or obligation.



CLAUSING KALAMAZOO 12" X 28" VERTICAL BANDSAWS

Features

- 230 or 460 volt 3 phase 60 hertz electrics
- Magnetic starter with 110v control circuit and overload protection
- 3 hp (2.2 Kw) TEFC motor
- Dual range transmission
- Sets of (4) blade guides sizes 1/16", 1/8", 3/16", 1/4", 3/8", 1/2", 5/8", 3/4", 1" with back-up roller
- Fixed table models 26-3/4" (680mm) x 29" (736 mm) heavy-duty cast iron table with two-way tilt (15°L & 45°R)
- Hydraulic table models 26-3/4" (680 mm) x 29" (736 mm) heavy-duty cast iron table with two-way tilt (15°L & 45°R) four (4) T-slots on top table, travel 13"
- Bonded rubber band wheels
- 110v work light
- Built-in air chip blower
- Blade tension indicator
- Blade speed indicator
- Rip fence
- 3/4" (19 mm) carbon hardback blade
- Locking band wheel doors
- Operation and parts manual
- Two (2) year limited warranty

Optional Equipment

- 1" Capacity Blade Welder, Shear and Flash Grinder
- Circle Cutting Attachment
- Miter Gauge
- Workholding Jaws

Specifications

Model	V2812F	V2812H
Throat	28" (710 mm)	28" (710 mm)
Work Height	12" (305 mm)	12" (305 mm)
Drive Motor	3 hp (2.2 kw)	3 hp (2.2 kw)
Blade Length	197"-199" (5004-5055 mm)	197"-199" (5004-5055 mm)
Blade Width	1/8"-1" (3-25 mm)	1/8"-1" (3-25 mm)
Blade Speed (fpm)	50-5200	50-5200
Dimensions		
Length	61" (1550 mm)	61" (1550 mm)
Width	44" (1118 mm)	44" (1118 mm)
Height	91" (2311 mm)	91" (2311 mm)
Net Weight	1650 lbs (748 kg)	1760 lbs (798 kg)
Shipping Weight	1800 lbs (816 kg)	1900 lbs (861 kg)

All specifications subject to change without notice or obligation.



CLAUSING KALAMAZOO LARGE CAPACITY 14" X 40" VERTICAL BANDSAWS

Features

- 230 or 460 volt 3 phase 60 hertz electrics
- Magnetic starter with 110v control circuit and overload protection
- 5 hp TEFC motor, with brake (full stop from max. speed within 10 seconds)
- Dual range transmission
- Sets of (4) blade guides sizes 1/16", 1/8", 3/16", 1/4", 3/8", 1/2", 5/8", 3/4", 1" with back-up roller
- 29" (737 mm) W x 27" (686 mm) L heavy-duty cast iron table with two-way tilt (15°L & 45°R)
- 29-1/2" (749 mm)W x 27-1/2" (699 mm)L heavy-duty cast iron table with two-way tilt (15° L & 45° R) four (4) T-slots on top (hydraulic table only) table, travel 13" (330 mm)
- Auxiliary table 19" (483 mm) W x 26-3/4" (679mm) L
- Bonded rubber band wheels
- 110V work light
- Built-in air chip blower
- Blade tension indicator
- Blade speed indicator
- Rip fence
- 1" (25.4 mm) carbon hardback blade
- Locking band wheel doors
- Operation and parts manual
- Two (2) year limited warranty

Specifications

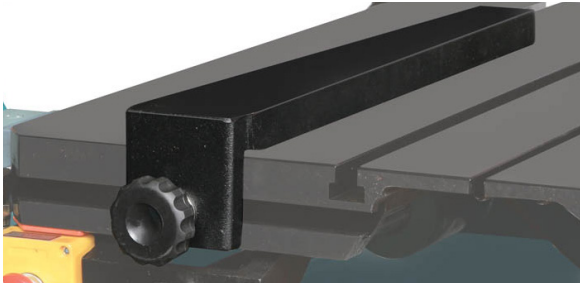
Model	V4014F	V4014H
Throat	40" (1016 mm)	40" (1016 mm)
Work Height	14" (356 mm)	14" (356 mm)
Table Height	54" (1372 mm)	54" (1372 mm)
Drive Motor	5 hp (3.75 kw)	5 hp (3.75 kw)
Blade Length	260"–263" (6604–6680 mm)	260"–263" (6604–6680 mm)
Blade Width	1/8"–1-1/4" (3–32 mm)	1/8"–1-1/4" (3–32 mm)
Blade Speed (fpm)	50–5200	50–5200
Dimensions		
Length	72" (1829 mm)	72" (1829 mm)
Width	41" (1042 mm)	41" (1042 mm)
Height	113" (2870 mm)	113" (2870 mm)
Net Weight	2976 lbs (1350 kg)	3395 lbs (1540 kg)
Shipping Weight	3395 lbs (1540 kg)	3627 lbs (1645 kg)

All specifications subject to change without notice or obligation.

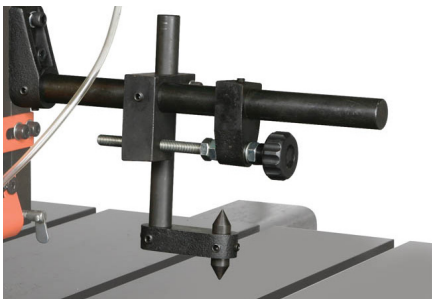
Optional Equipment

- 1" Capacity Blade Welder, Shear and Flash Grinder (Carbon Stock Only)
- Circle Cutting Attachment
- Miter Gauge
- Workholding Jaws

RIP FENCE STANDARD



CIRCLE CUTTING ATTACHMENT



Part No.	Description	Weight
KM260	Circle Cutting Attachment	8 lbs.

Part No.	Description	Weight
KM2002	Workholding Jaw	37 lbs.
3006080	Right Side Manual Vise (for Model VG450M)	105 lbs.

CHEVRON GUIDE INSERT



Part No.	Description
KM12500	Chevron Guide Inserts 1- 1/4" (set of 4 V40 Series)

MITER GAUGE



Miter Gauge for Hydraulic Table Shown

Part No.	Description	Weight
KM198	Miter Gauge Fixed Table	7 lbs.
KM198H	Miter Gauge Hydraulic Table	7 lbs.

WELDER, SHEAR AND GRINDER



Clausing Installed Welder, Shear and Grinder. Welder Capacity: 1" Carbon Blades.

Part No.	Voltage	Weight
SM1975/H	230v	60 lbs.
SM1975/R	460v	60 lbs.

HEAVY-DUTY ROLLER TABLE

Part No.	Description	Weight
SA24T	21" x 10' (31"-39") Heavy-Duty Roller Table	485 lbs.
SA25T	21" x 5' (31"-39") Heavy-Duty Roller Table	325 lbs.
SA26T	25" x 10' (31"-39") Heavy-Duty Roller Table	500 lbs.
SA27T	25" x 5' (31"-39") Heavy-Duty Roller Table	325 lbs.



Your Single Source for Machine Tools

Clausing Precision Drills

- Clausing Belt-drive Drills
- Clausing Geared-head Drills
- Clausing Radial Drills

Clausing Precision Mills

- Clausing Bed Mills
- Clausing CNC Bed Mills
- Clausing Knee Mills
- Clausing EVS Knee Mills
- Clausing CNC Knee Mills
- Clausing Universal Mills

Clausing Precision Grinders

- Clausing Manual Grinders
- Clausing 2 Axes Hydraulic Grinders
- Clausing 3 Axes Hydraulic Grinders
- Clausing ASDIII Automatic Grinders
- Clausing OD/ID Grinders

Clausing Precision Cutting Machines

- Clausing/Kalamazoo Horizontal Bandsaws
- Clausing/Kalamazoo Vertical Bandsaws
- Clausing/Kalamazoo Tilt Frame Miter Bandsaws
- Clausing/Kalamazoo Cold Saws

Clausing Precision Lathes

- Clausing/Colchester Geared Head Lathes
- Clausing/Colchester Professional V.S. Lathes
- Clausing/Colchester MAGNUM V.S. Lathes
- Clausing C Series Lathes
- Clausing Large Swing Standard Lathes
- Clausing Large Swing CNC Lathes
- Clausing Precision Toolroom Lathes



For detailed catalogs of the full line of Clausing Machine Tools visit our Web Site:

www.clausing-industrial.com

Fax: 269-345-5945 or e-mail us and request an electronic (pdf) catalog at:

info@clausing-industrial.com

Your Authorized Clausing Precision Machine Tools Distributor

